



INSTITUTE OF THE
MOTOR INDUSTRY

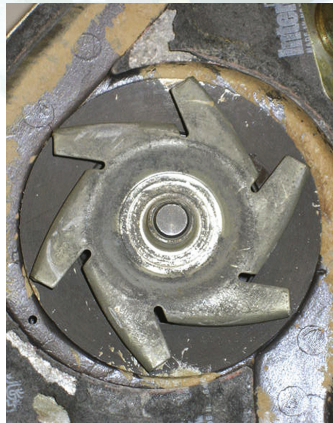
IMI PROFESSIONAL REGISTER

TOGETHER, DRIVING
UP STANDARDS



*The Gates Power Clean
Flush Tool can ensure
more first time fit success*

*Damage from deposit build-
up inside the radiator*



the other components.

Accumulated sludge and scale deposits are removed without the use of harsh chemicals or solvents. It cleans out radiators, heat exchangers, hoses and also engine blocks.

As engine design has advanced and more aluminium components have been added to the cooling system, the need for internal system cleanliness has increased. Gates introduced its Power Clean Flush Tool late last year in a bid to ensure more first time fit success.

Seeing the signs

Gates argues that for a cooling system expert, a premature water pump failure that's been caused by contamination is relatively easy to spot. The problem is that by then, of course, a significant amount of administrative time has already been lost and costs incurred. This may include customer breakdown and inconvenience, rectification work by the garage as well as administration at motor factor level. Ill feelings may have been generated, reputations tarnished.

Reliability and credibility are essential qualities that garages cannot afford to lose.

Flushing the system efficiently makes sense and while some mechanics might take a negative view and deem a specialist tool to be unnecessary, it's clear that a professional flushing tool is an essential preventive maintenance tool.

Gates points out that, at the very least, the additional cost is small beer by comparison with the rectification time saved. At the other end of the scale, the cost of not using one involves a serious risk of engine damage that could adversely influence profitability and cost the garage dearly in more ways than one.

To request further details about the Power Clean Flush Tool from Gates **circle 076**



**WHO DO CONSUMERS TRUST
WITH THEIR VEHICLE?**

**IMI PROFESSIONAL REGISTER
HELPS THEM DECIDE.**

*We're telling millions of consumers
where to find skilled and competent
automotive professionals they can
trust. Make sure you're on the IMI
Professional Register so they can find
you too.*

Whether you're in management or customer service, in a technical or a non-technical role, there's an entry route to suit you.

- Demonstrate your professional knowledge, skills and competence
- Assure your customers of a quality service
- Help drive up standards across the sector
- Increase public and consumer confidence in the industry

READERLINK 007

Join the Professional Register at: www.imiregister.org.uk